

DOWNTOWN ST. PETERSBURG OFFICE SPACE FOR LEASE



572 SECOND AVENUE SOUTH
ST. PETERSBURG, FL 33701



OSPREY
REAL ESTATE SERVICES
NORTH BAY, LLC

(727) 894-2525

360 CENTRAL AVENUE, SUITE 1230
ST. PETERSBURG, FL 33701

FAX: (727) 898-1010

WEB: WWW.OSPREYNORTHBAY.COM



572 SECOND AVENUE SOUTH
ST. PETERSBURG, FL 33701



OSPREY
REAL ESTATE SERVICES
NORTH BAY, LLC

Office Space For Lease
\$12/square foot, MG

- Approximately 1,000 square feet
- Two offices
- Two bathrooms
- Front and back door access
- Security system
- Seven free reserved parking spaces
- Excellent location on Second Avenue and Sixth Street South
- Tenant pays own utilities and janitorial

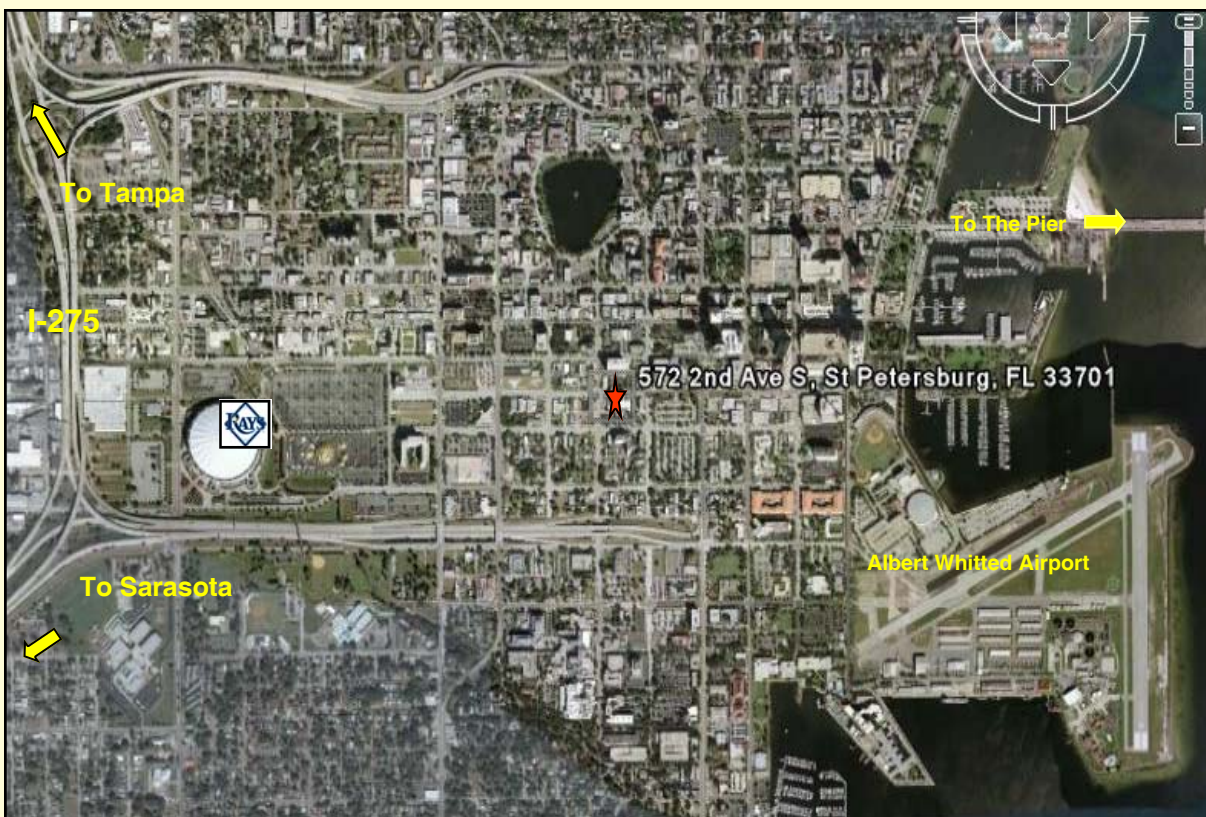
FOR ADDITIONAL INFORMATION CONTACT:

DALE KLEINE

(727) 894-2525

DKLEINE@OSPREYRES.COM

WWW.OSPREYNORTHBAY.COM



ANY INFORMATION GIVEN HEREIN IS OBTAINED FROM SOURCES CONSIDERED RELIABLE. BROKER IS NOT RESPONSIBLE FOR MISSTATEMENT OF FACTS, ERRORS, OMISSIONS, PRIOR SALE, WITHDRAWAL FROM THE MARKET, MODIFICATION OF MORTGAGE COMMITMENT, TERMS AND CONSIDERATIONS OR CHANGES IN PRICE WITHOUT NOTICE. THE INFORMATION SUPPLIED HEREIN IS FOR INFORMATIONAL PURPOSES ONLY AND SHALL NOT CONTAIN A WARRANTY OR ASSURANCE THAT INFORMATION IS CORRECT. ANY PERSON INTENDING TO RELY UPON THE INFORMATION HEREIN SHOULD VERIFY SAID INFORMATION INDEPENDENTLY.

