

PROFESSIONAL OFFICE FOR SALE/LEASE



1700 DR. ML KING JR. ST. N.
ST. PETERSBURG, FLORIDA 33704

FOR SALE: \$895,000

FOR LEASE: \$16.00 PER SQ FT, MG

OWNER FINANCING AVAILABLE

ANN WALTERS

727.894.2525

727.560.1285 CELL

727.898.1010 FAX

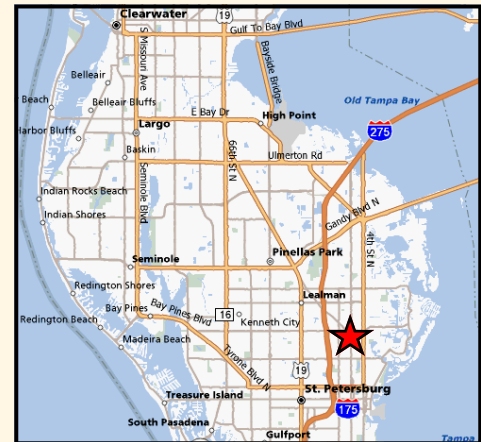
AWALTERS@OSPREYRES.COM

WWW.OSPREYNORTHBAY.COM



OSPREY REAL ESTATE SERVICES
A MEMBER OF THE OSPREY FAMILY OF COMPANIES

REAL ESTATE
MANAGEMENT
INVESTMENT
RECREATION



St. Petersburg, Florida

1700 DR. ML KING JR ST. N.
ST. PETERSBURG, FLORIDA 33704



OSPREY REAL ESTATE SERVICES
A MEMBER OF THE OSPREY FAMILY OF COMPANIES

6,003 SQUARE FEET TOTAL
3,905 SQUARE FEET AVAILABLE

ANN WALTERS

727.894.2525 PHONE

727.560.1285 CELL

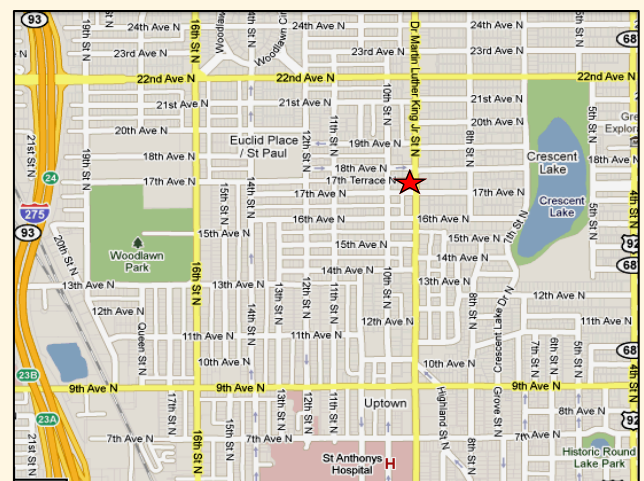
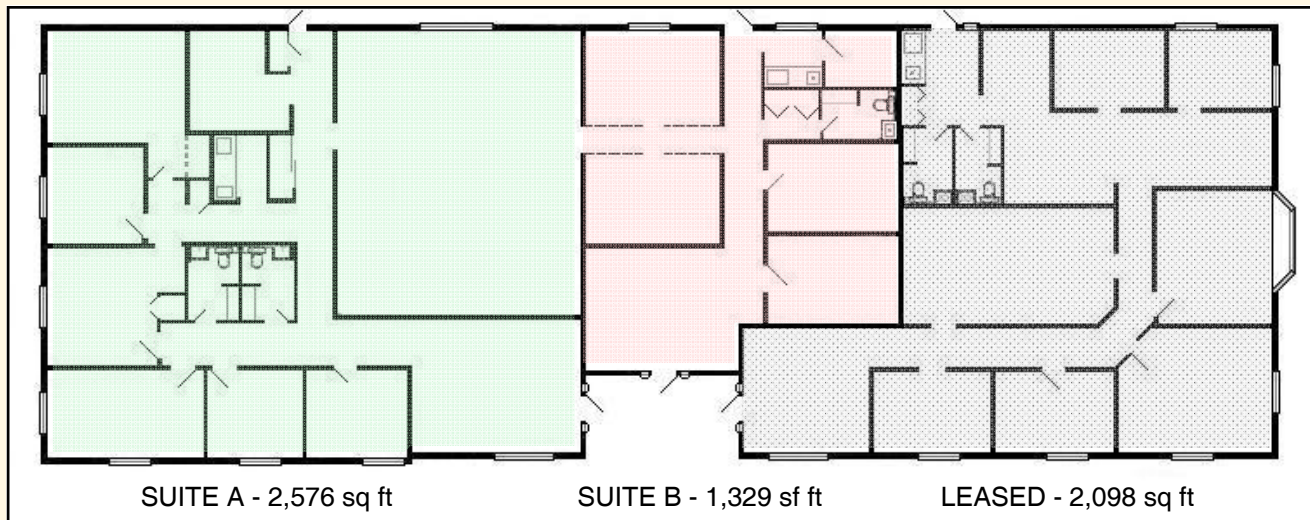
727.898.1010 FAX

AWALTERS@OSPREYRES.COM

FOR SALE: \$895,000

FOR LEASE: \$16.00 PER SQ FT, MG

- Great professional office space
- Ample parking in the front or rear of building
- Suites A and B available



ST. PETERSBURG, FLORIDA

Any information given herein is obtained from sources considered reliable. Broker is not responsible for misstatement of facts, errors, omissions, prior sale, withdrawal from the market, modification of mortgage commitment, terms and considerations or changes in price without notice. The information supplied herein is for informational purposes only and shall not contain a warranty or assurance that information is correct. Any person intending to rely upon the information herein should verify said information independently.