

DOWNTOWN ST. PETERSBURG CLASS A OFFICE - READY TO LEASE



136 4TH STREET NORTH - PARK WEST
ST. PETERSBURG, FL 33701

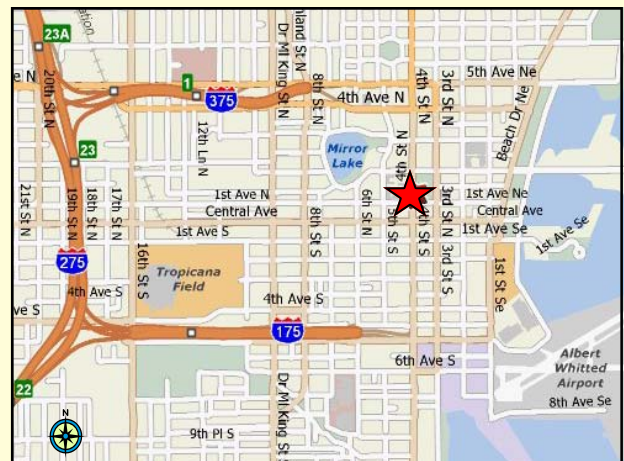
FULL FLOOR AVAILABLE



OSPREY
REAL ESTATE SERVICES
NORTH BAY, LLC

(727) 894-2525

360 CENTRAL AVENUE, SUITE 650
ST. PETERSBURG, FL 33701
FAX: (727) 898-1010
WEB: WWW.OSPREYNORTHBAY.COM



St. Petersburg, Florida



PARK WEST
136 4TH STREET NORTH
ST. PETERSBURG, FL 33701



OSPREY
REAL ESTATE SERVICES
NORTH BAY, LLC

LEASE RATE: \$24/SF FULL SERVICE

- New Class A Construction - Overlooking Williams Park and Gardens
- 1,600 sq ft suites to 22,500 sq ft office space available
- Excellent downtown location in primary business district
- Reserved parking available on-site
- Additional parking nearby
- Building signage opportunities
- Energy efficient cost saving construction
- Tenant improvements included
- Secured entryway

FOR ADDITIONAL INFORMATION CONTACT:

PAULA CLAIR SMITH,
CCIM

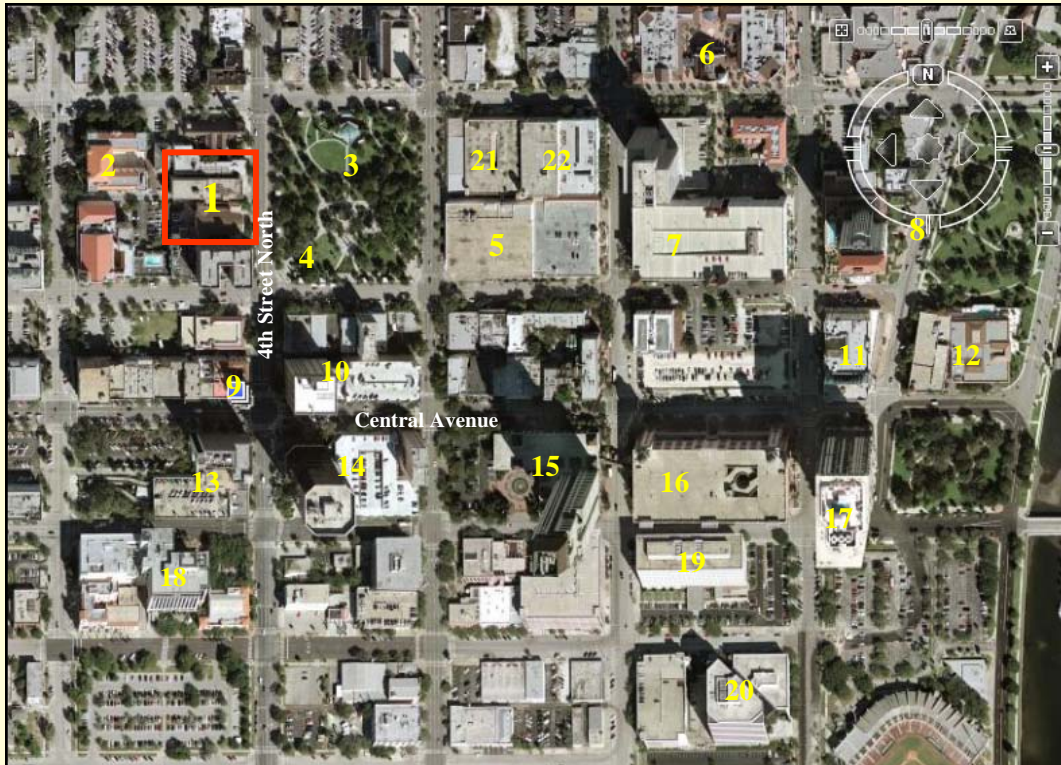
LICENSED REAL ESTATE BROKER

(727) 894-2525

(727) 409-5539 (CELL)

(727) 499-7390 (FAX)

PSMITH@OSPREYRES.COM



KEY

1. **136 4th St. N.**
2. City Hall
3. Williams Park
4. PSTA Hub
5. Progress Energy
6. Baywalk
7. Baywalk Parking
8. Beach Drive Retail
9. U.S. Post Office
10. Municipal Services Center
11. Hampton Inn
12. St. Petersburg Yacht Club
13. Wachovia Parking
14. First Central Tower
15. Bank of America Tower
16. 100 Bay Central
17. Bayfront Tower
18. St. Petersburg Times
19. Signature Condos
20. City Center
21. American Stage
22. St. Petersburg College

ANY INFORMATION GIVEN HEREIN IS OBTAINED FROM SOURCES CONSIDERED RELIABLE. BROKER IS NOT RESPONSIBLE FOR MISSTATEMENT OF FACTS, ERRORS, OMISSIONS, PRIOR SALE, WITHDRAWAL FROM THE MARKET, MODIFICATION OF MORTGAGE COMMITMENT, TERMS AND CONSIDERATIONS OR CHANGES IN PRICE WITHOUT NOTICE. THE INFORMATION SUPPLIED HEREIN IS FOR INFORMATIONAL PURPOSES ONLY AND SHALL NOT CONTAIN A WARRANTY OR ASSURANCE THAT INFORMATION IS CORRECT. ANY PERSON INTENDING TO RELY UPON THE INFORMATION HEREIN SHOULD VERIFY SAID INFORMATION INDEPENDENTLY.

